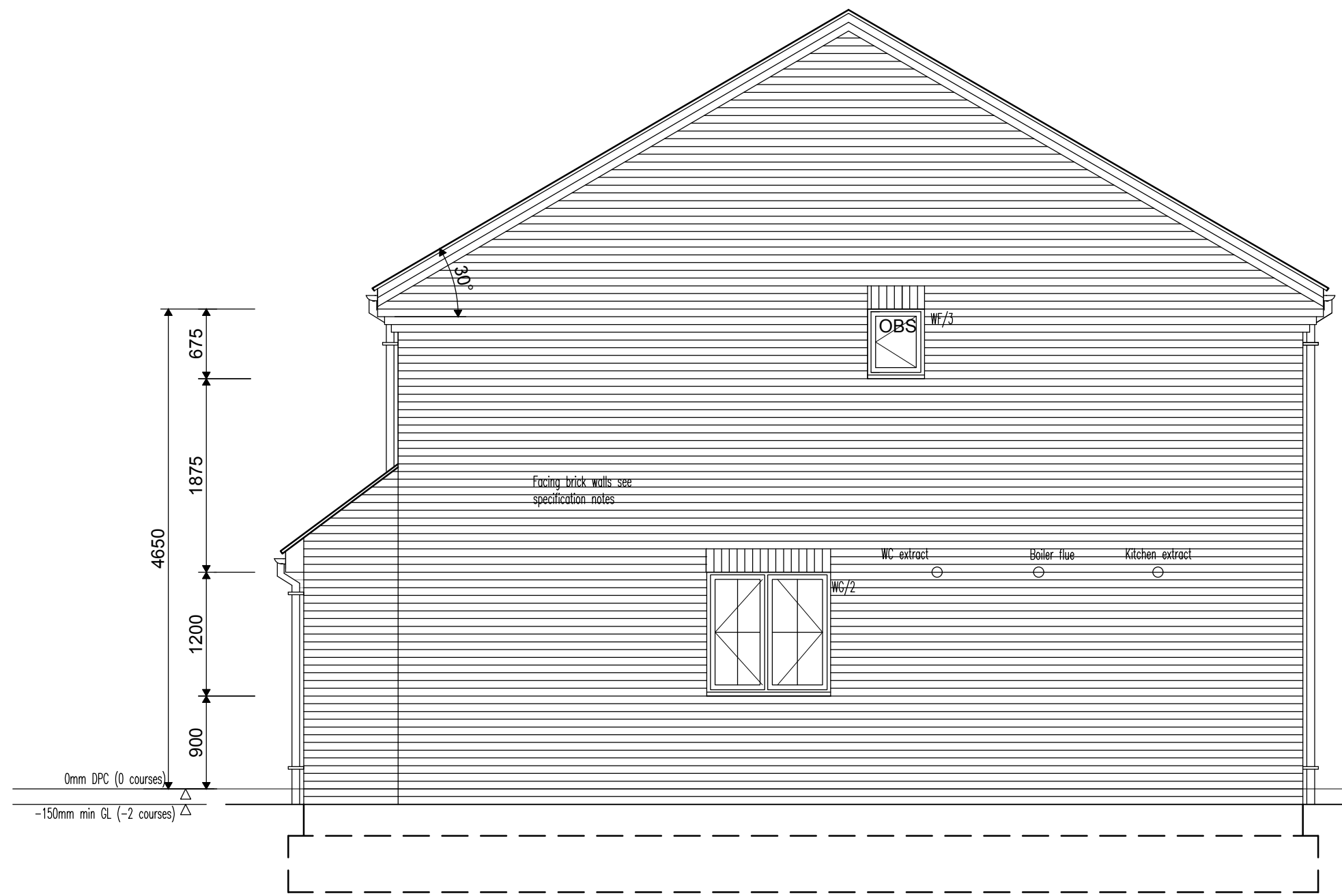
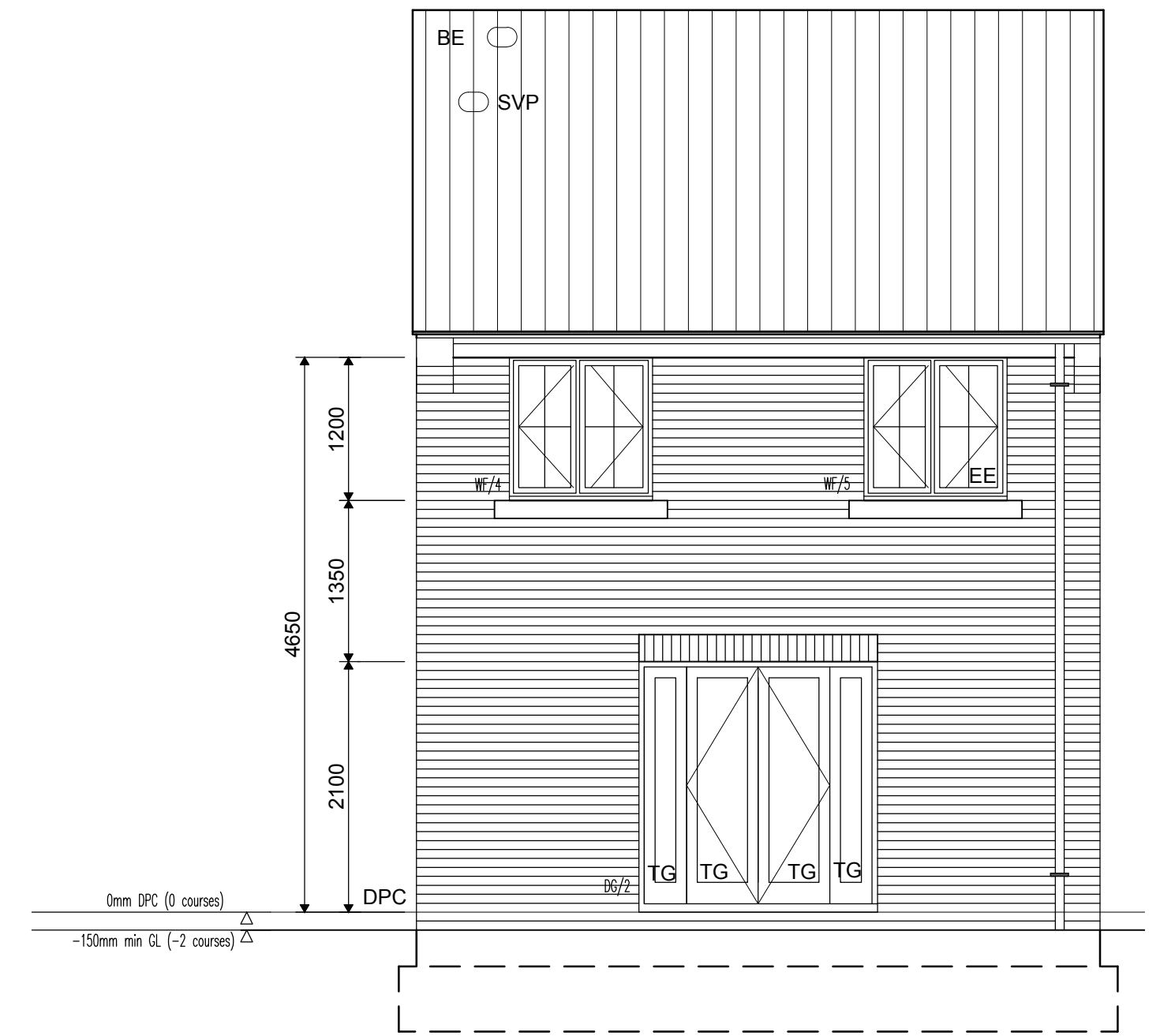


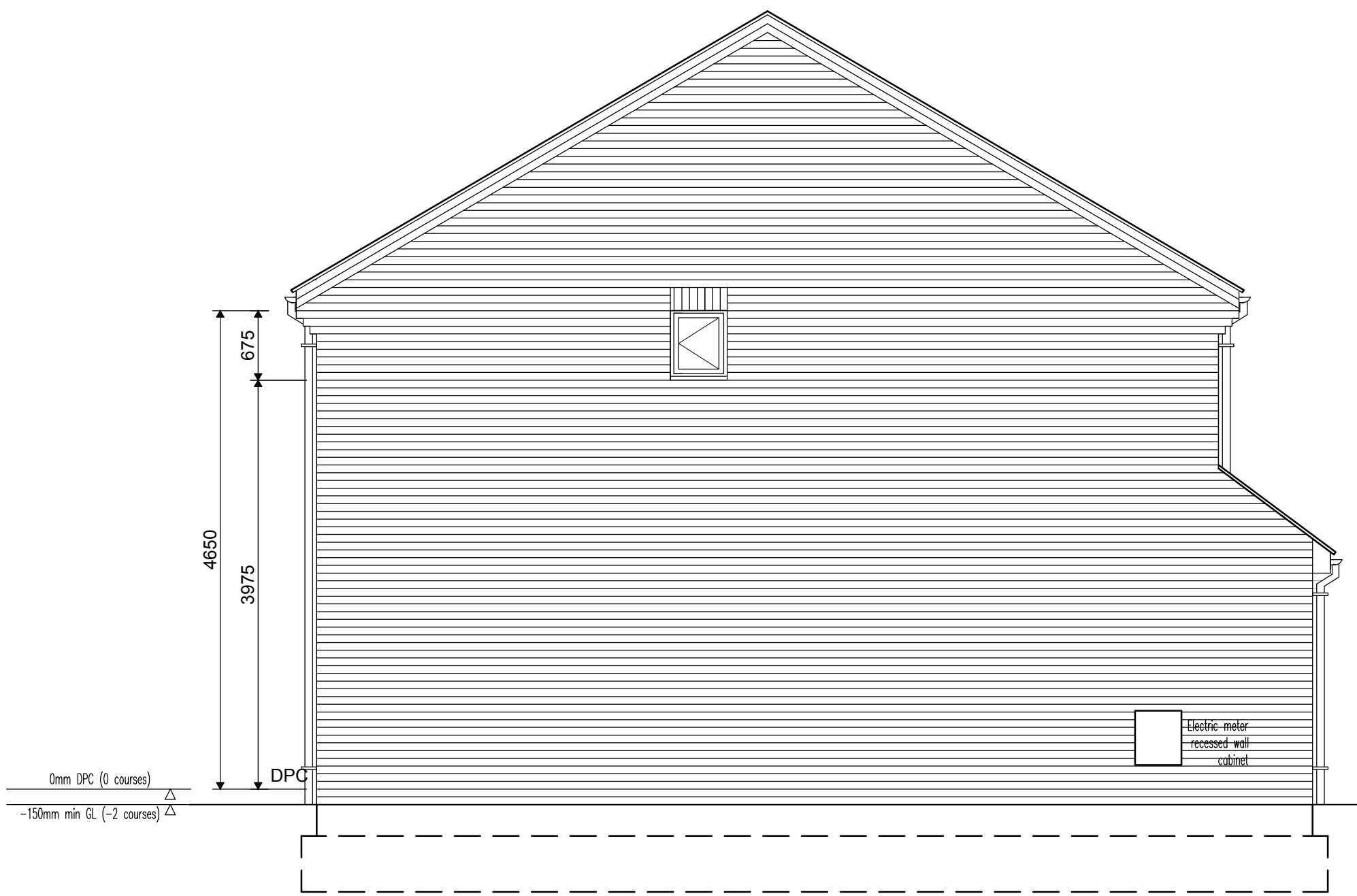
FRONT ELEVATION



SIDE ELEVATION



REAR ELEVATION



SIDE ELEVATION

ELEVATION LEGEND

MJ	Movement Joint	DPC	Damp proof course set min 150mm above finished ground level	KE	Kitchen extractor ducted through to proprietary external airbrick or vent tile when located in tile hanging
RWP	Rainwater downpipe	OBS	Obscure glass to inner pane only	BE	Bathroom/Ensuite/Cloaks extractor ducted through to proprietary external airbrick or vent tile when located in tile hanging
TG	Toughened glass to BS6206 1981 and in accordance with approved document N	EE	Emergency Egress window	Gas	Wall mounted Gas or Elec meter box
SLF	Stepped lead flashing linked to stepped cavity tray in wall	BE	Bathroom extract taken to thru tile ventilator		Semi concealed gas meter box
LF	Lead flashing linked to cavity tray within wall construction	SVP	SVP's thru tile vent at head of drain run only, otherwise taken to durgo valve within roofspace. Refer to drainage layout.		
BFT	Boiler flue terminal (Note: all boiler flues to be located at a minimum of 300mm from any open able window)	TV	Thru tile vents to promote cross ventilation of roof space		

Note: For location of Airbricks refer to Substructure layout
Note: For pitch of roofs refer to sections and roof plans

STAIRCASE CRITERIA - HOUSES

GROUND TO FIRST FLOOR TOTAL RISE	= 2600mm
13 No RISERS @	= 200mm
13 No GOING @	= 223mm
PITCH OF STAIRCASE @	= 42°
OVERALL STRINGERS TO BE	= 905mm

Height to top of handrail/guarding = 900mm min.
Ballusters to be 99mm clear spaced apart.
Min 2.0m clear headroom above stair pitch line

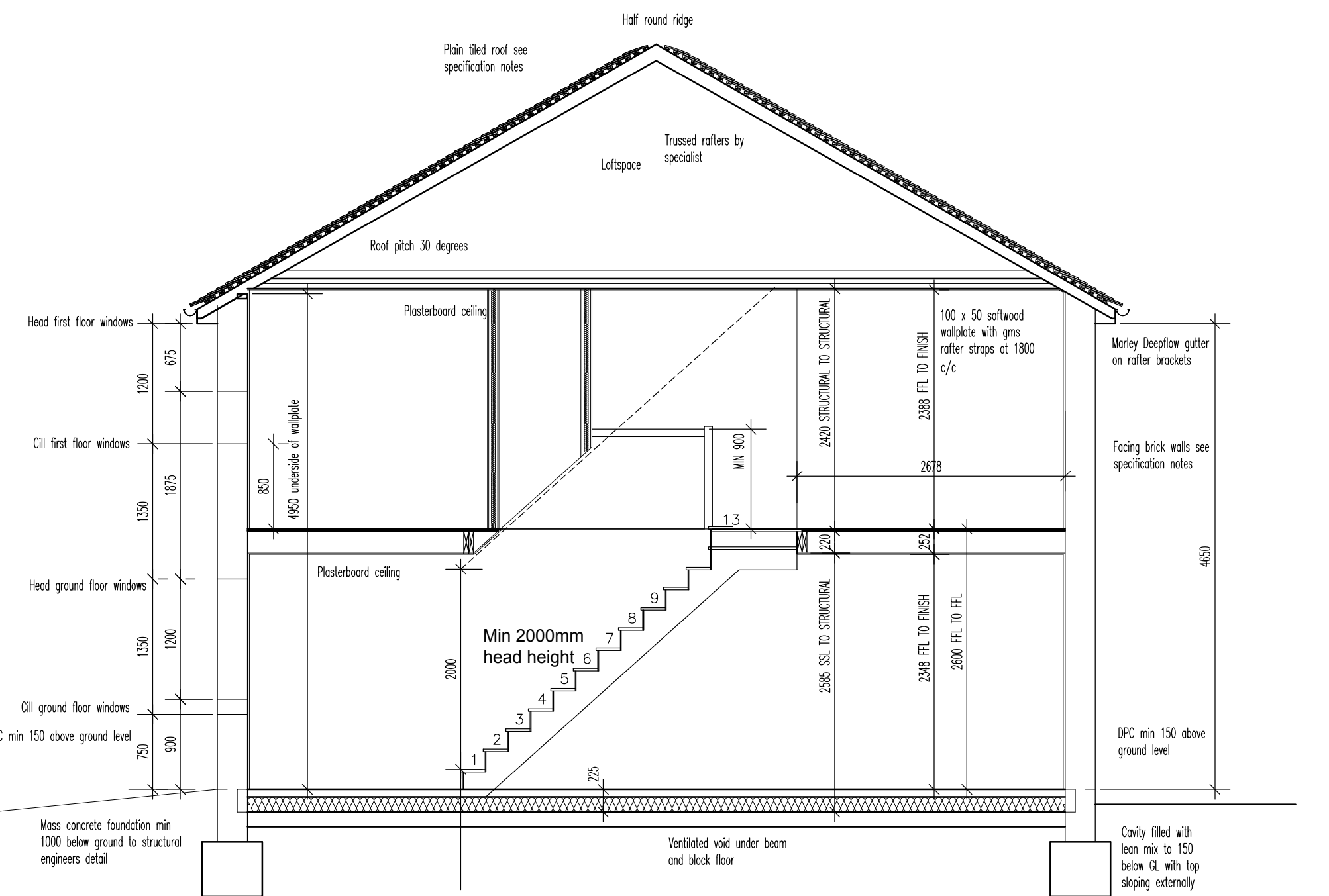
BUILDER TO CHECK STAIR VOID DIMENSIONS ON SITE PRIOR TO ORDER / FABRICATION OF STAIRCASE. DIMENSIONS TO CORRESPOND WITH STAIR MANUFACTURERS DETAILS.

LEVEL THRESHOLD IN LINE WITH PART M

Note: Ramps are to be laid at a gradient of no less than 1:20. Entrances from roadways may have a short length of ramped approach no steeper than 1:12. A level area must be provided outside all front doors at threshold area.

Threshold detail in accordance with manufacturers details complete with mobility threshold seal and low access weather bar installed onto cill and bottom of door in accordance with manufacturers details.

Vented and drained space (sides open)



TYPICAL SECTION